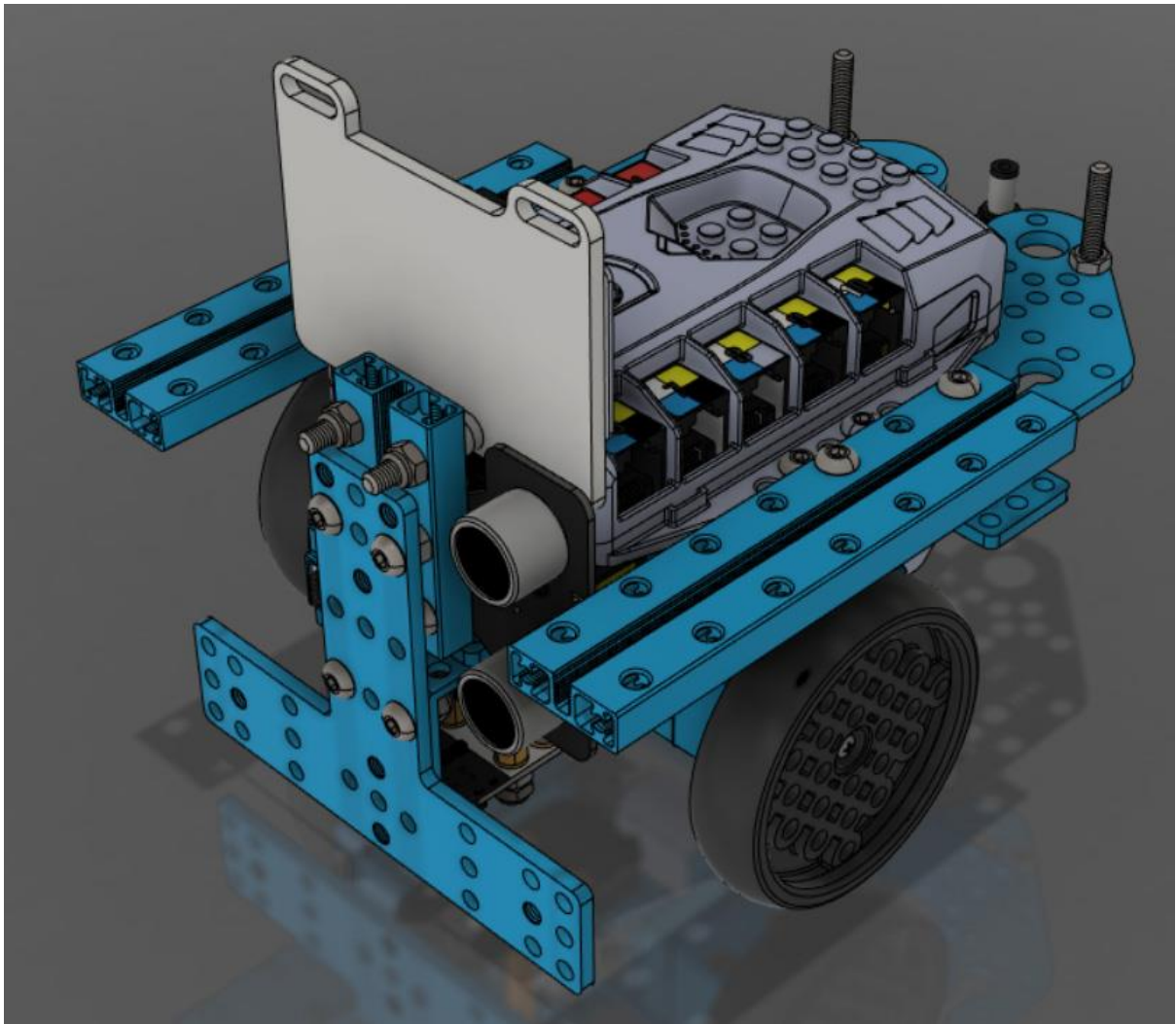
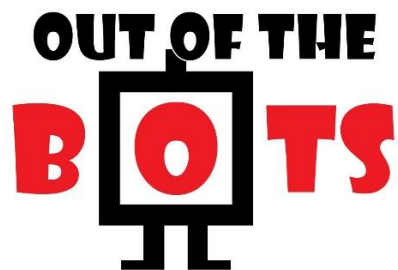


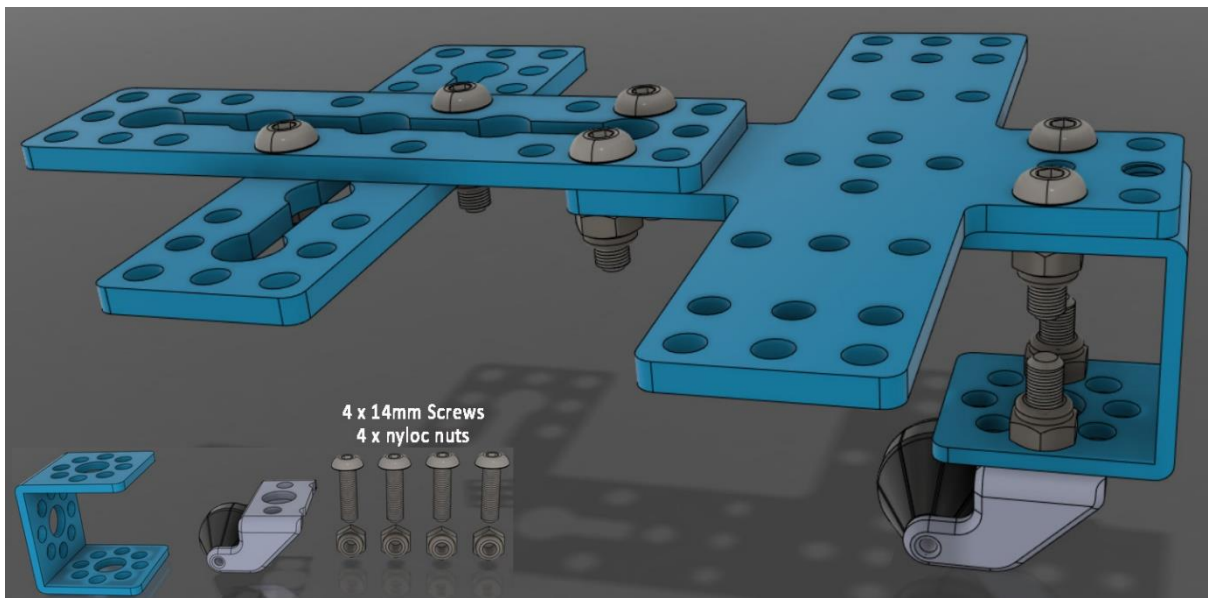
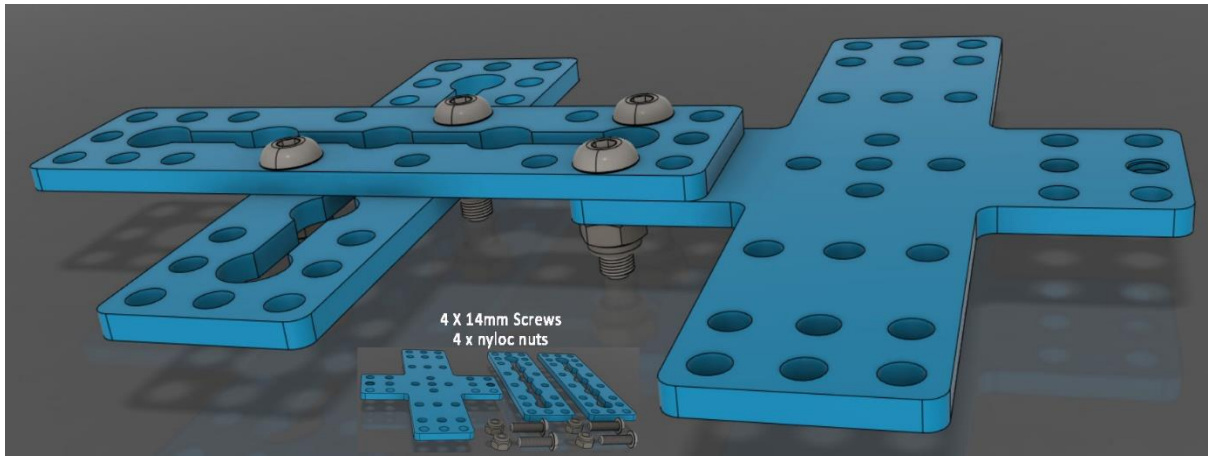
mBot Teaching Bot

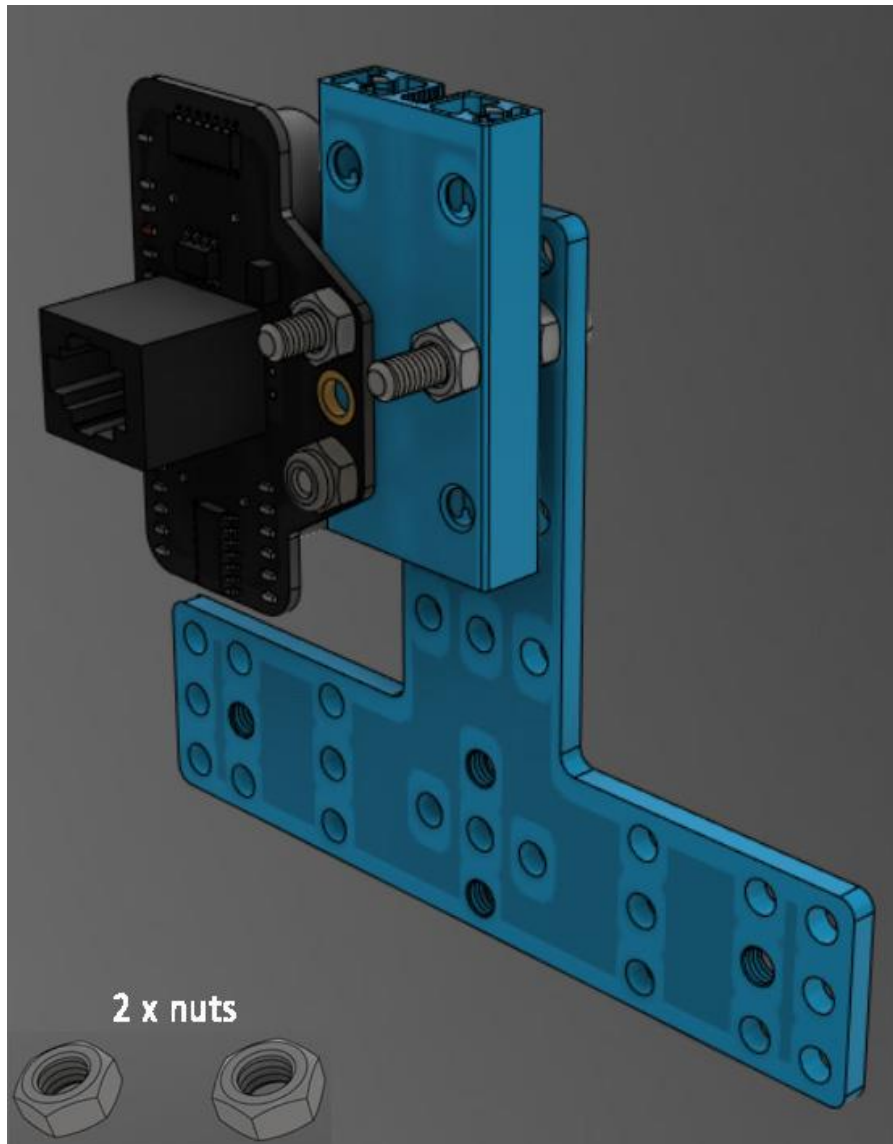
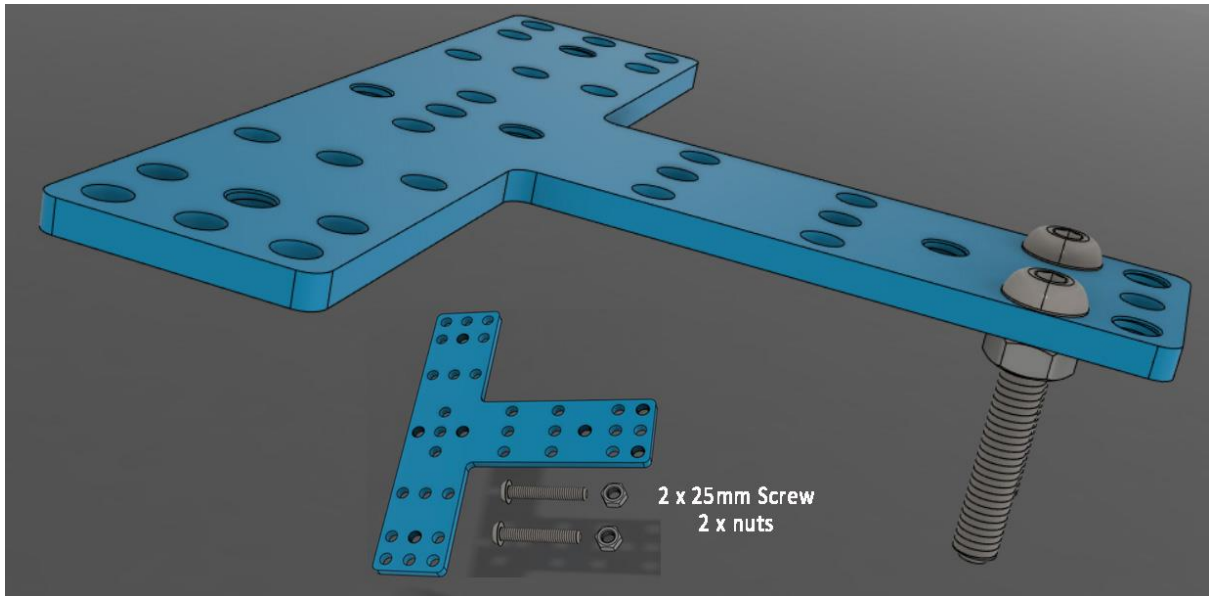
Build Instructions

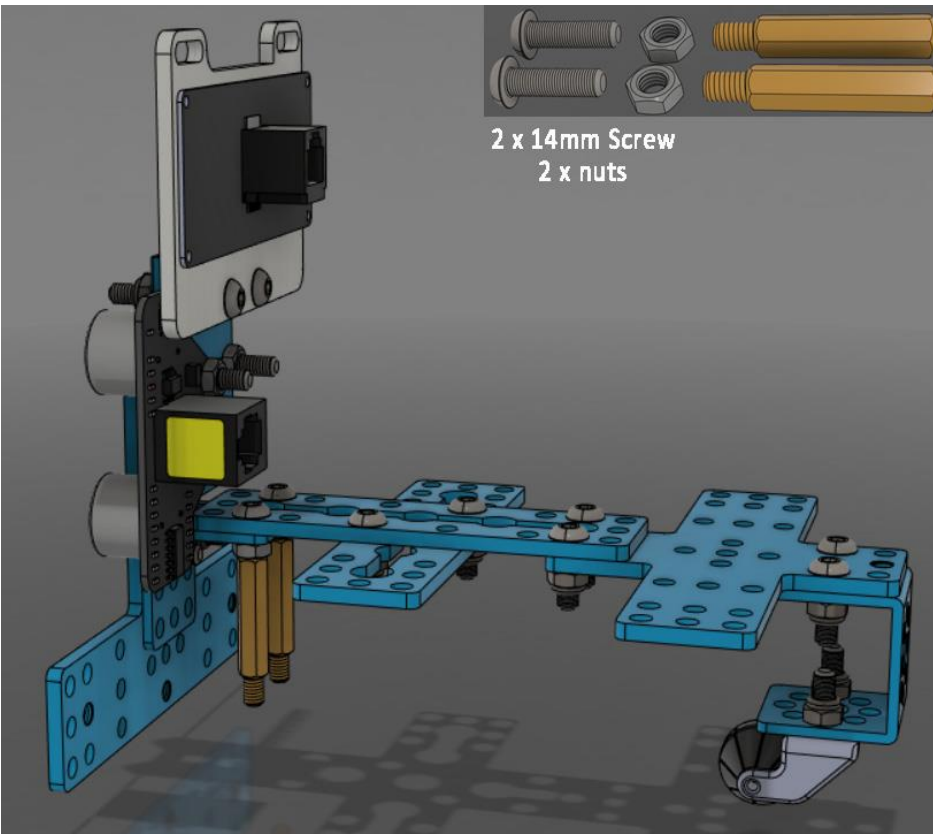
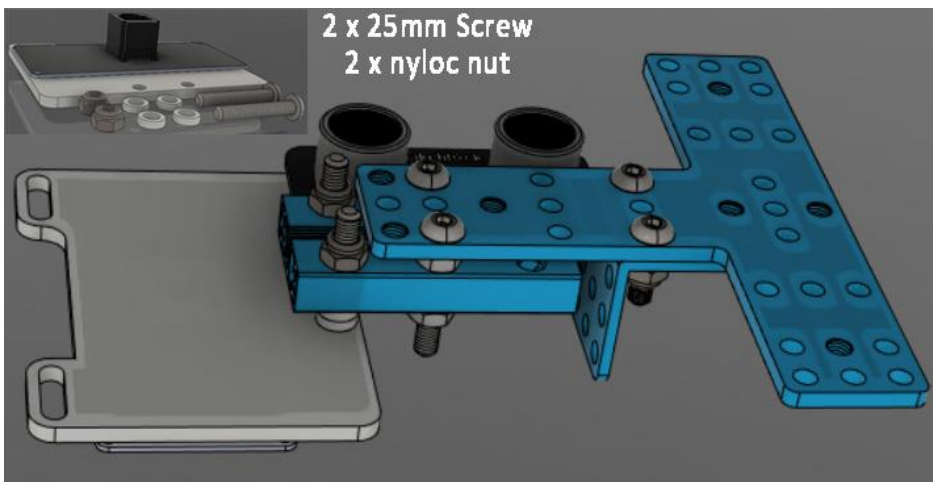
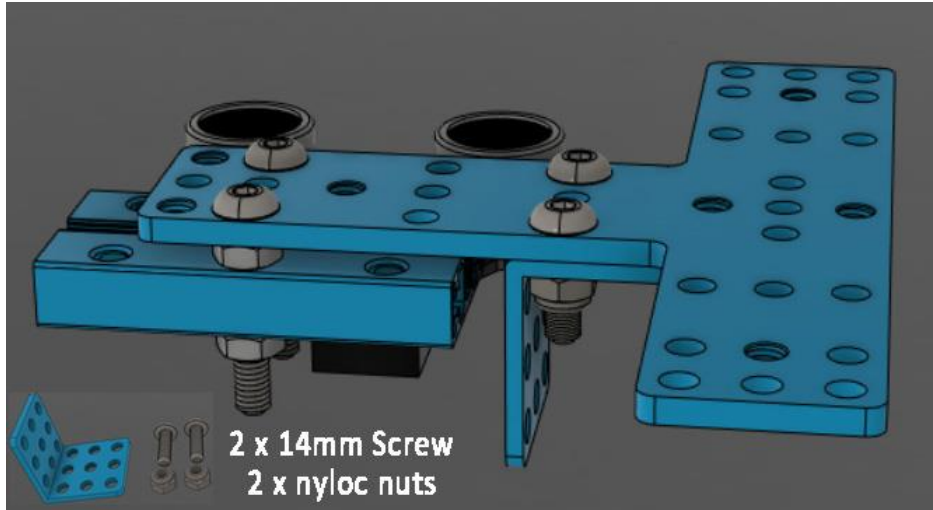


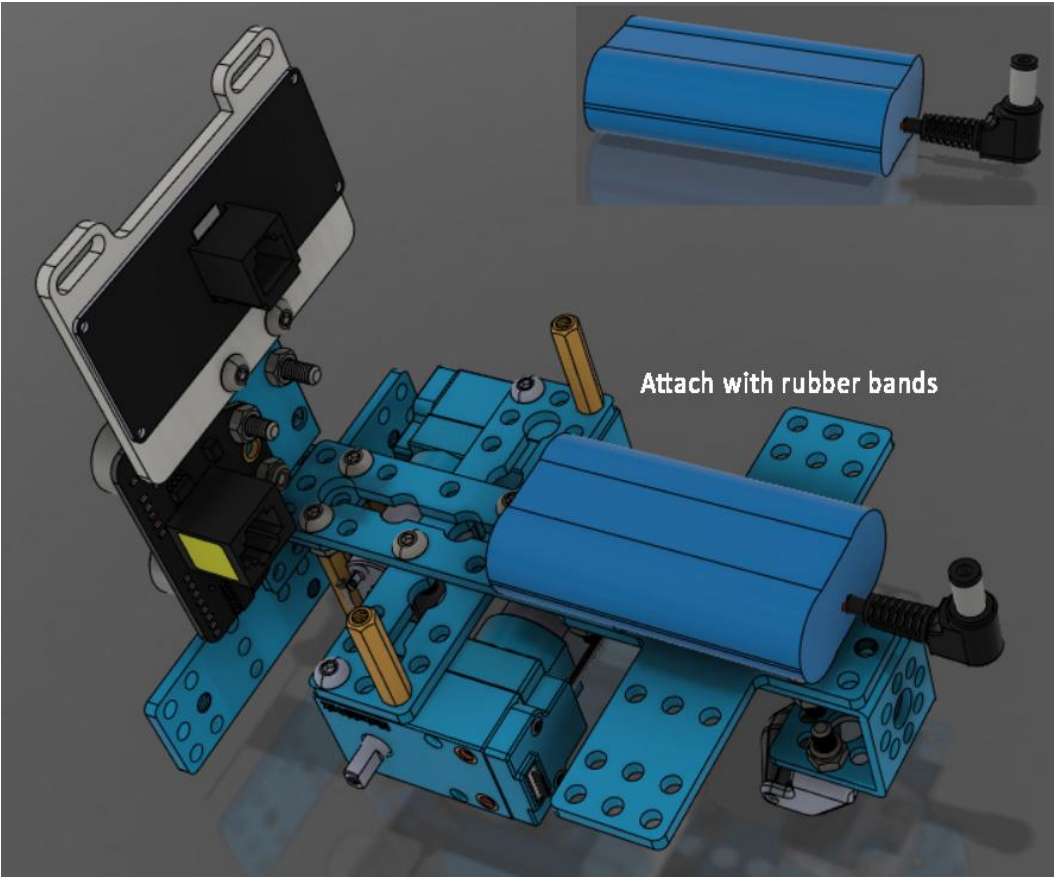
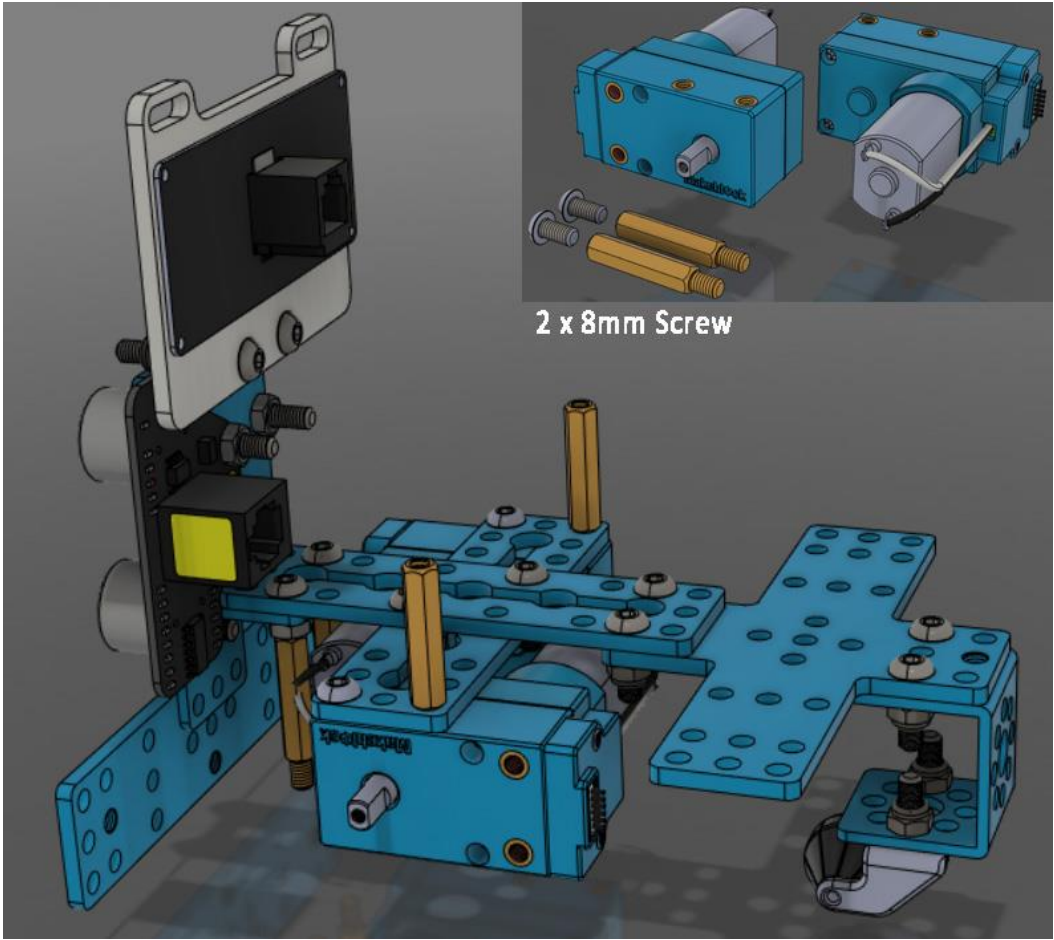
Created by
Out of the BOTS
Last updated on 4/4/21

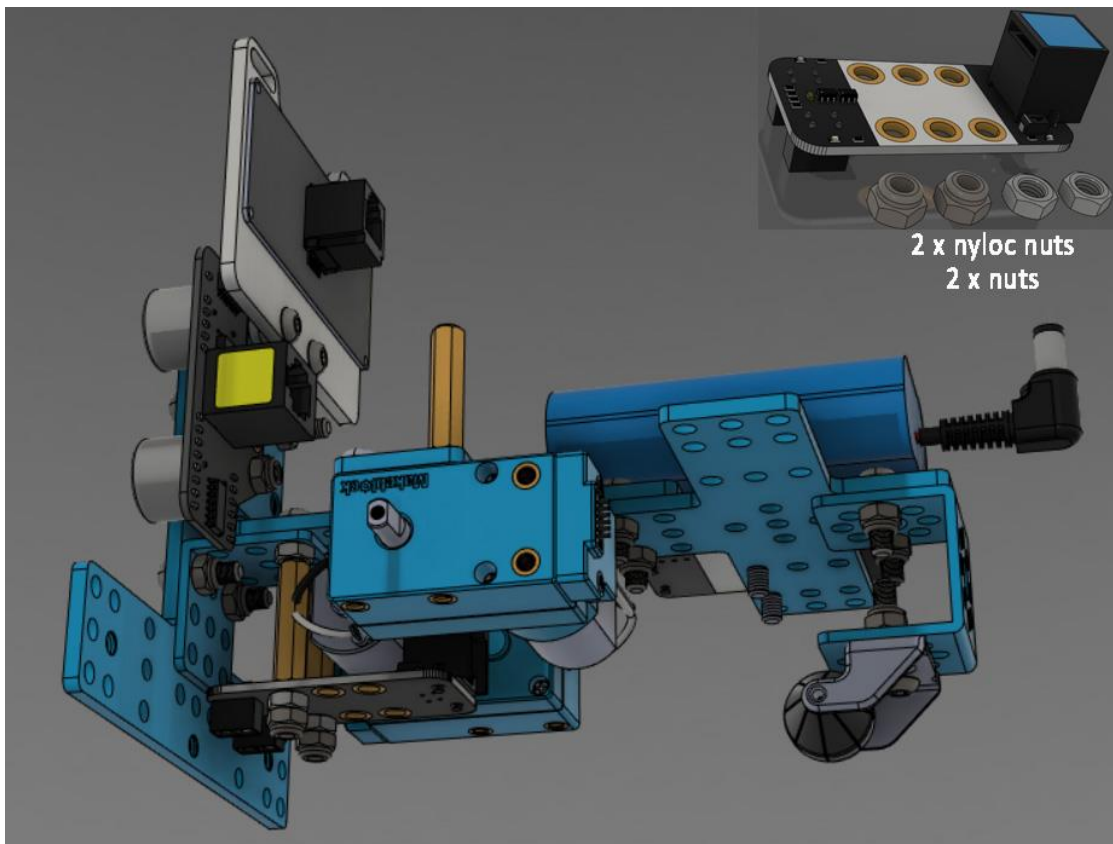
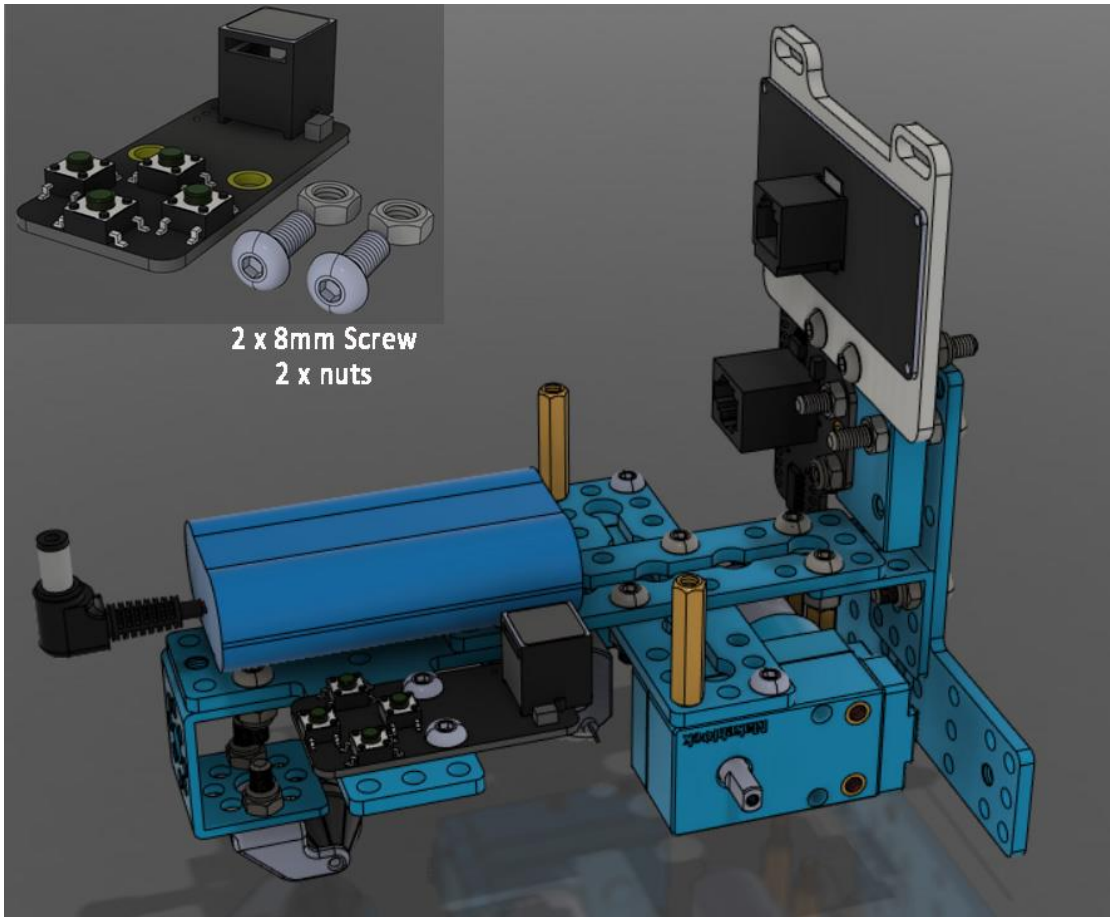


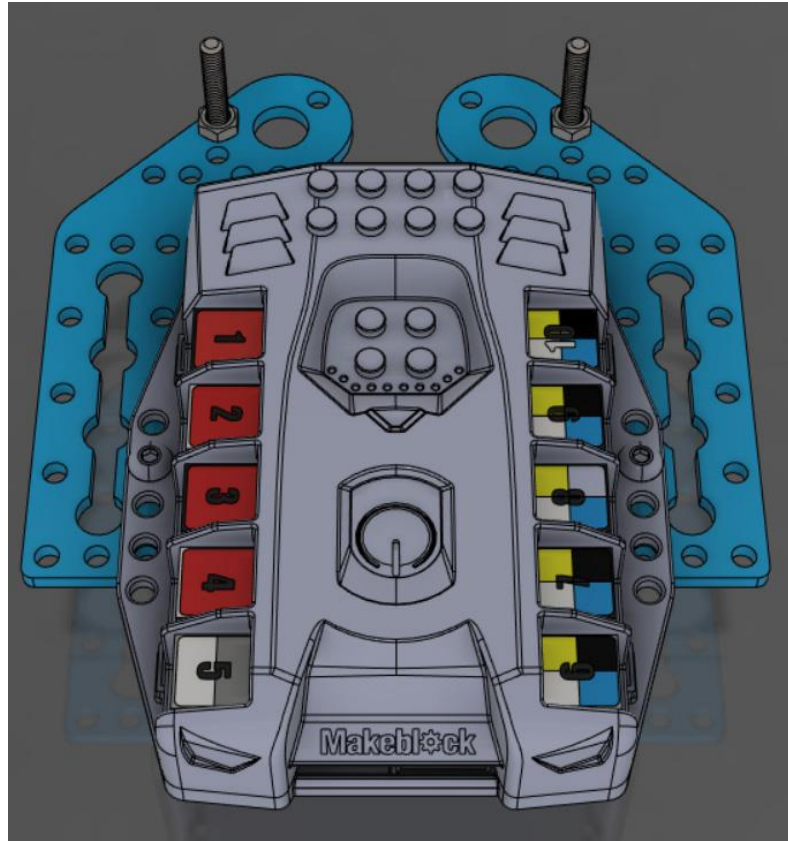
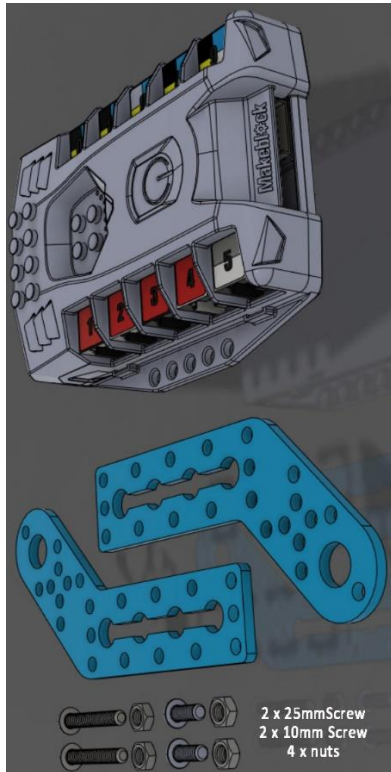












Please make the following electrical connections:

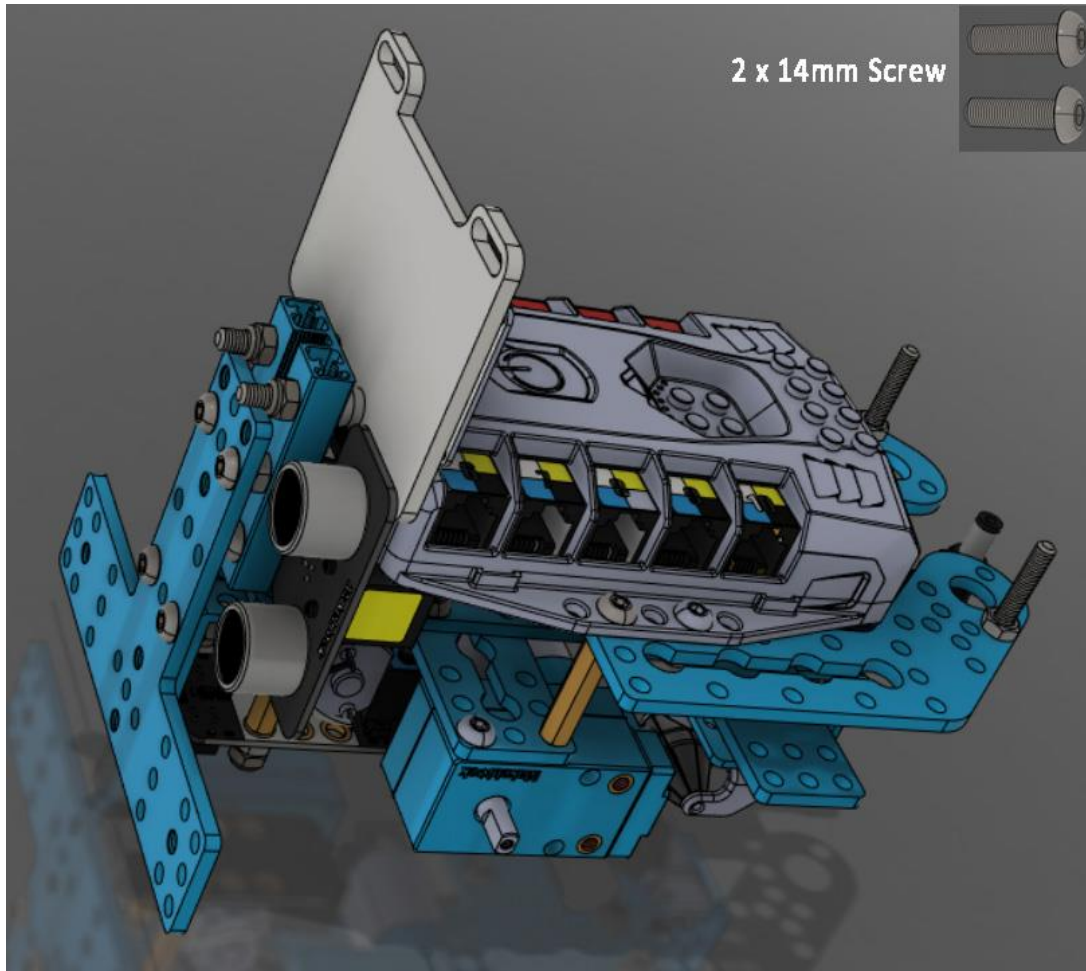
Connect Encoder Motor Wire to both motor ports on the Me Auriga main board.

Connect RJ25 Cable to the Ultrasonic Sensor.

Connect RJ25 Cable to the Line Following sensor.

Connect RJ25 to the Me Button Module.

Connect J525 Cable to Me LED Matrix



Please make the following electrical connections:

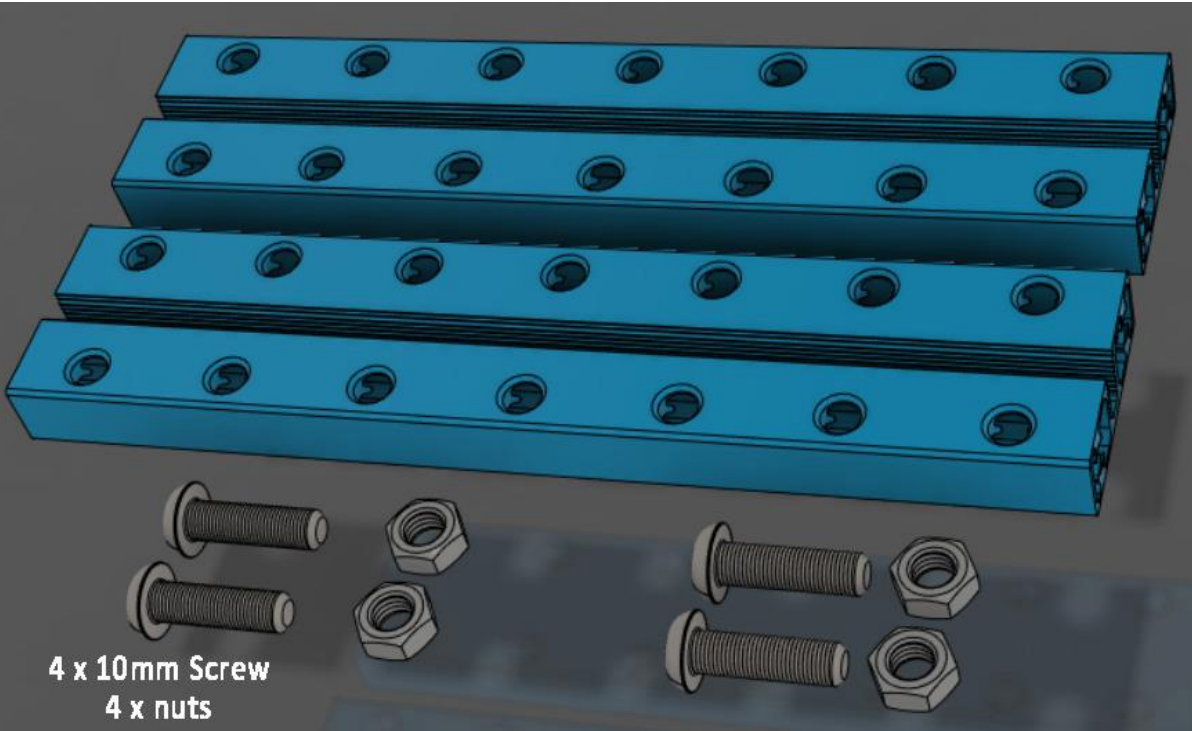
Connect other end of Encoder Motor Wire to the 180 Encoder Motors

Connect RJ25 Cable from Line Following sensor to Port 9

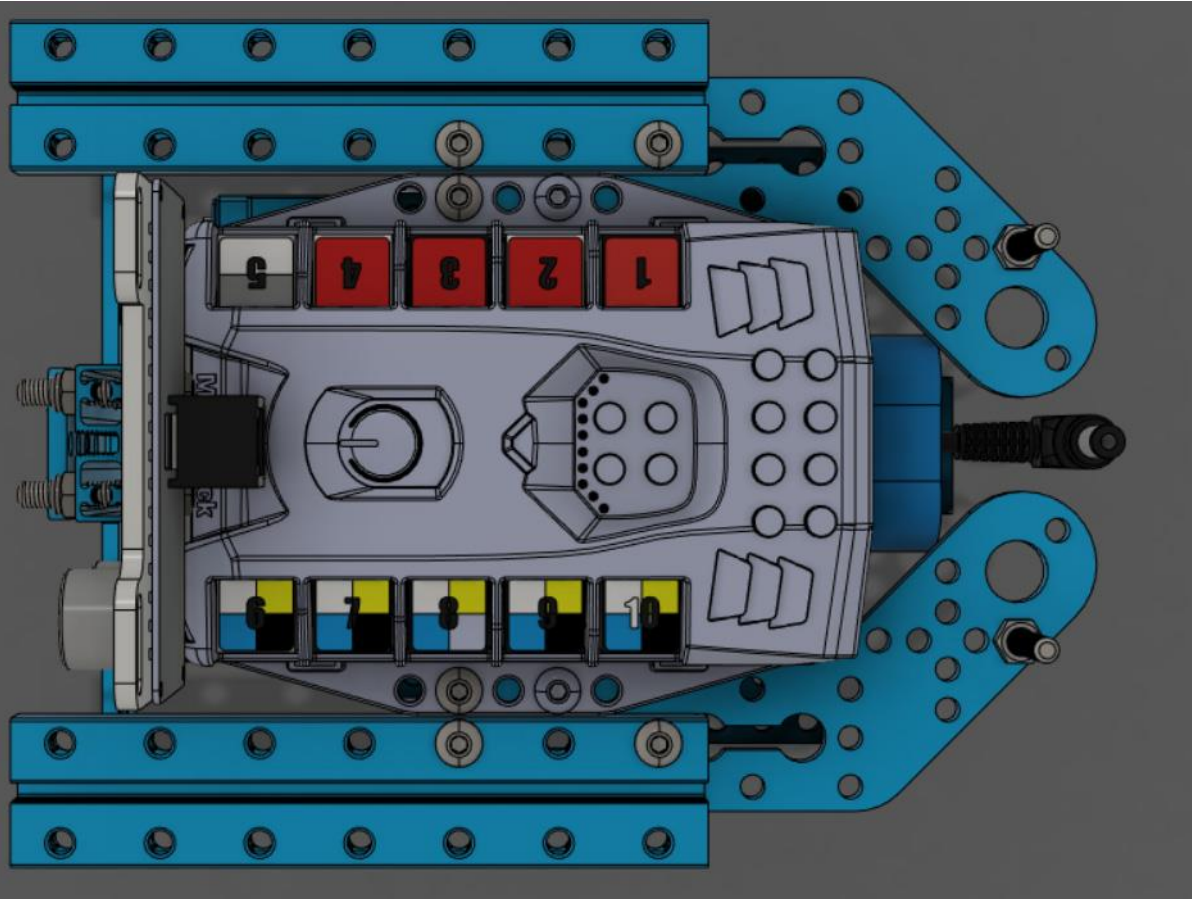
Connect the RJ25 Cable from Ultrasonic sensor to Port 10

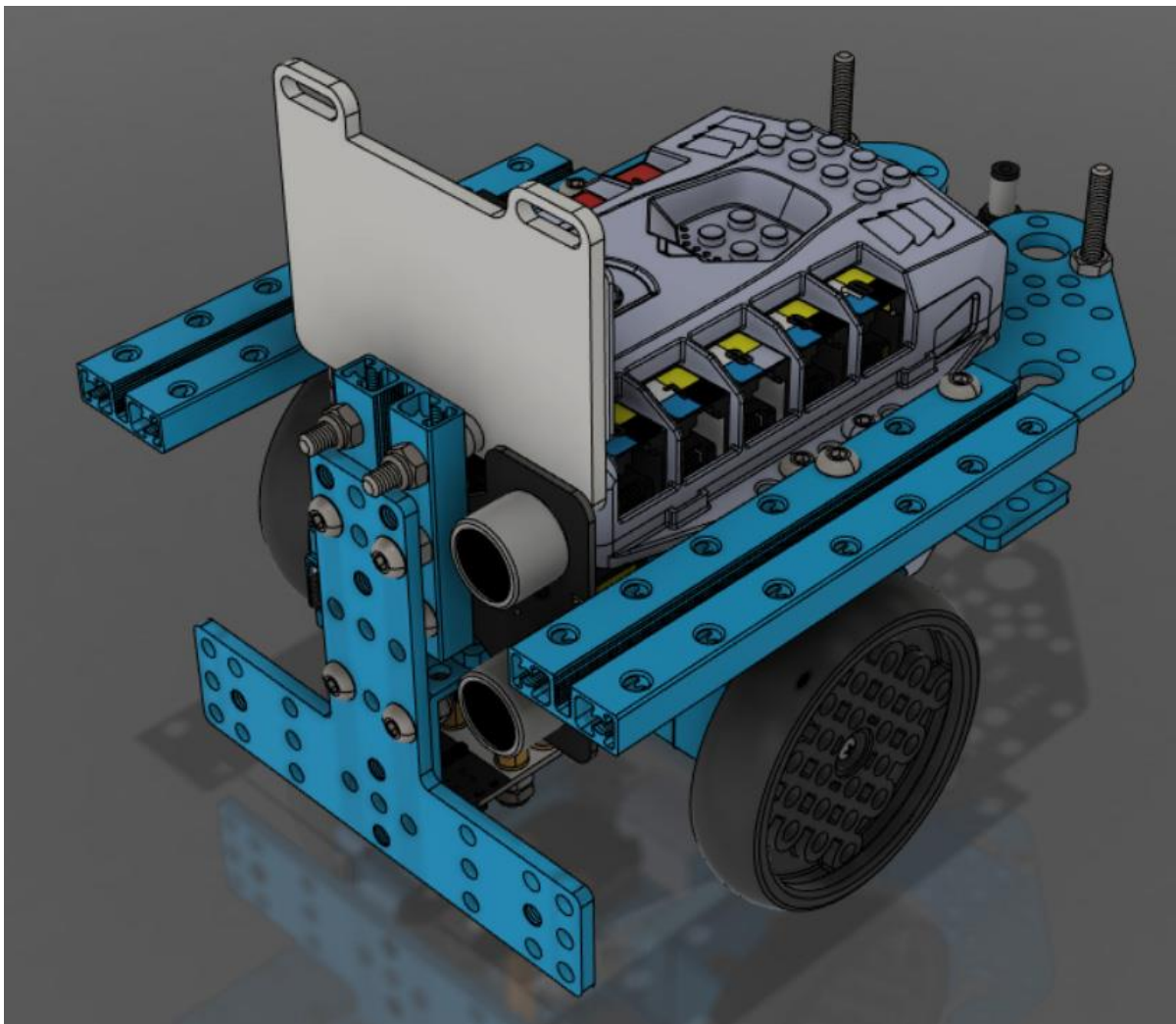
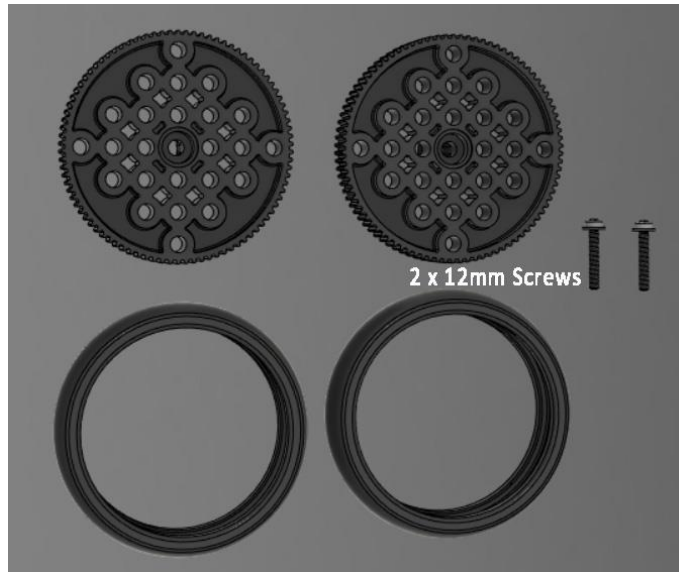
Connect the RJ25 Cable from Me button Module to Port 8

Connect the RJ25 Cable from Me LED Matrix to Port 6



4 x 10mm Screw
4 x nuts





Construction is now complete

Time for fun!